



# DU.IT14N

# DU.IT24NVE

## UNDERGROUND INSTALLATION

resin coated encoder

up to 3.5 m

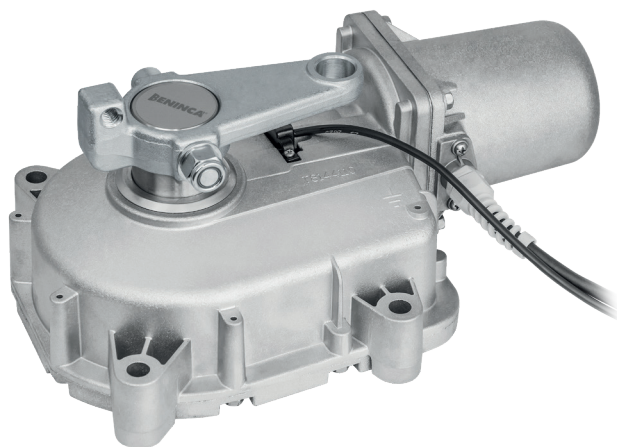
## DUIT.BR ACCESSORY AVAILABLE

(FOR THE ADJUSTMENT OF MOST  
OF FOUNDATION BOXES IN THE MARKET)



## CONTROL UNITS:

<b>DU.IT14N</b>	—	BRAINY HEADY
<b>DU.IT14NE</b>	—	BRAINY
<b>DU.IT14NV</b>	—	BRAINY HEADY
<b>DU.IT14NVE</b>	—	BRAINY
<b>DU.IT14NVE-10</b>	—	BRAINY
<b>DU.IT24NVE</b>	—	BRAINY24 <sup>PLUS</sup> BRAINY24



Irreversible electromechanical geared motor available in 230 Vac and 24 Vdc version, with the option of opening to 180°. Full metal mechanics and built-in mechanical stop. It's available a model equipped with 10 m cable to facilitate wiring and prevent problems linked to the oxidation of electrical contacts (DU.IT14NVE-10).

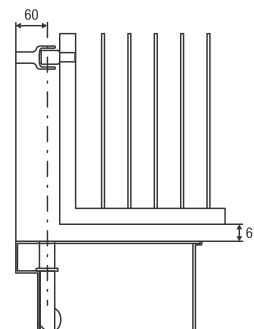
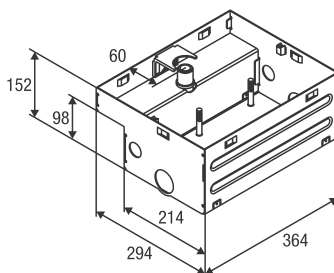
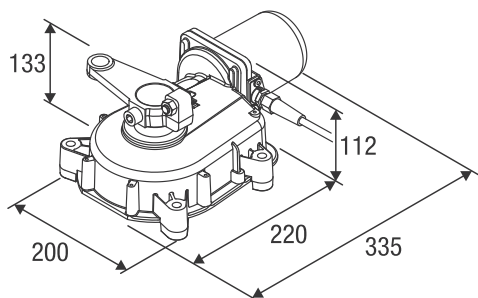
## 230 Vac

- Irreversible 230 Vac electromechanical geared motor
- Also available in the fast version (DU.IT14NV), with IP68 encoder (DU.IT14NE) and fast version with IP68 encoder (DU.IT14NVE)
- The encoder guarantees maximum safety and precision while the gate is moving

## 24 Vdc | intensive use

- Irreversible 24 Vdc electromechanical gear motor for intensive use equipped with IP68 encoder
- The encoder device ensures maximum safety and precision in the gate moving phases
- Amperometric sensor obstacle detection system to prevent crushing
- Optional battery powered operation

Cams' disk not included



**DU.ITIX**

Self-supporting stainless steel foundation box max. opening 110°. Supplied with cover and cap, requires release accessory SB.DUxx.

**DU.ITCF**

Self-supporting foundation box with cataphoretic painted finish, max. opening 110°. Supplied with grey painted cataphoresis cap, requires release accessory SB.Duxx.

**DU.ITCF-BL**

Self-supporting foundation box with cataphoretic painted finish, max. opening 110°. Supplied with black painted cataphoresis cover (RAL9005) and cap, requires release accessory SB.Duxx.

**SB.DUIT.K**

Kit comprising personalised release key and components to connect the motor to the gate. Mechanical stop incorporated.

**SB.DUIT.L**

Kit comprising release hex key and components to connect the motor to the gate. Mechanical stop incorporated.

**SB.DUIT.L-UK**

Kit comprising release hex key and elements to connect the motor to the gate. Equipped with adjustable mechanical stop.

**SB.DU180.K**

Kit comprising personalised release key and components to connect the motor to the gate, for openings up to 180°.

**SB.DU180.L**

Kit comprising release hex key and components to connect the motor to the gate, for openings up to 180°.

**DU.ITST**

Adjustable mechanical open stop 75°/80°/85°/90°/95°/100°.

**DU.V96**

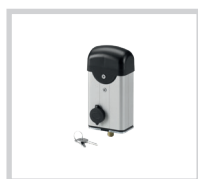
12 Vac/dc vertical electric lock, supplied with counterplate. Permits internal/external release.

**DU.V90**

12 Vac/dc horizontal electric lock, supplied with counterplate. Permits internal/external release.

**DU.9990**

Covering plate for DU.V90.

**E.LOCK**

230 Vac vertical electric lock, supplied with counterplate.

**E.LOCKSE**

Extended cylinder for E.LOCK electric lock. It allows unlocking gates up to 55mm-thick from the outside.

**DUIT.BR-R**

Adaptors for installation of a right motor to the most common foundation boxes on the market.

**DUIT.BR-L**

Version for left motor with connecting rod.

**DU.FCN**

Watertight limit switches unit with cam holder disk included.

**CABLE.24E**

Cable reel with 5 conductors (2 for motor, 3 for encoder) for connecting the encoder device in the 24 Vdc versions. L= 100 m.

**XLB.CB**

Battery box fitted with universal bracket and cables. IP54.

**AUTOMATISMI BENINCÀ SpA** • Via del Capitello, 45 • 36066 Sandrigo (VI) ITALY • T +39 0444 751030 • sales@beninca.com

TECHNICAL DATA	DU.IT14N*	DU.IT14NE	DU.IT14NV	DU.IT14NVE	DU.IT24NVE*
Motor supply	230 Vac (50-60Hz)	230 Vac (50-60Hz)	230 Vac (50-60Hz)	230 Vac (50-60Hz)	24 Vdc
Max absorbed current	1.6 A	1.6 A	1.6 A	1.6 A	11 A
Torque	370 Nm	370 Nm	220 Nm	220 Nm	280 Nm
Opening time	22"	22"	11"	11"	15"
Duty cycle	30%	30%	40%	40%	intensive use
Protection level	IP67	IP67	IP67	IP67	IP67
Encoder	NO	YES	NO	YES	YES
Operating temperature	-20°C /+50°C	-20°C /+50°C	-20°C /+50°C	-20°C /+50°C	-20°C /+50°C
Leaf max dimension	3.5 m	3.5 m	2.1 m	2.1 m	3.5 m
Weight	11.3 kg	11.2 kg	11 kg	11.2 kg	10 kg
Items no. per pallet	44	44	44	44	44
DU.ITIX weight	8.1 kg	8.1 kg	8.1 kg	8.1 kg	8.1 kg
DU.ITCF weight	9.6 kg	9.6 kg	9.6 kg	9.6 kg	9.6 kg
No. of foundation boxes per pallet	32	32	32	32	32

\* Available in 115 VAC version