



# VN.S/M

# VN.ST/MT

## SECTIONAL DOORS AND ROLLING DOORS INDUSTRIAL USE

up to 40 m<sup>2</sup>



### CONTROL UNITS:

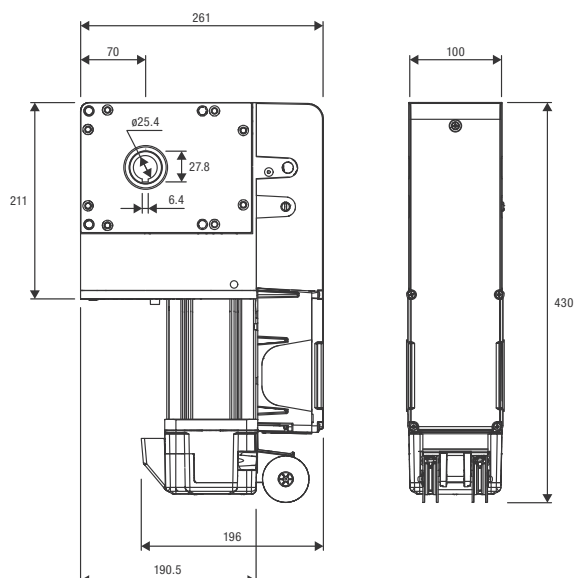
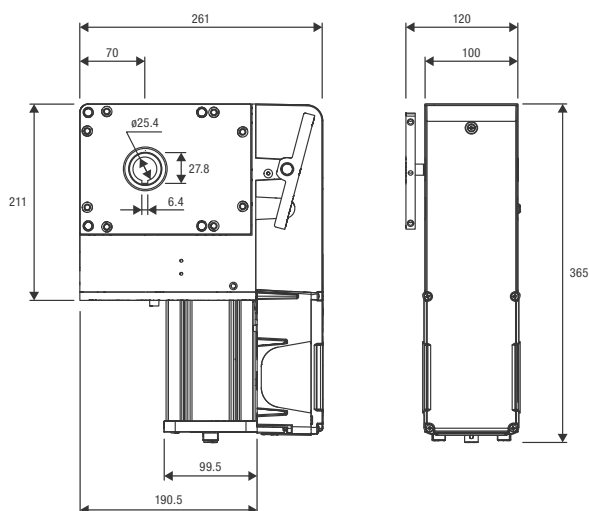
**VN.S20** THINKY  
**VN.M20** START  
CELL.P

**VN.S40** THINKY  
**VN.M40** START  
CELL.P

**VN.ST20** THINKY  
**VN.MT20** START  
**VN.MT40**

### 230 Vac | 400 Vac

- Irreversible electromechanical gear motor with quick release or manual chain operated movement available in the single and three-phase versions with 1/20 and 1/40 reduction rates
- Plastic box that makes wiring the motor easier, thanks to the position of the front clip connector and the possibility of reaching three different positions with the wiring
- Two accessories are available for chain drives with reduction rates 1:1 (off-axis motor installation) or 1:1.8 (torque or speed multipliers)
- Easy and precise adjustment of limit switch position
- Maximum safety guaranteed during rapid release phases, thanks to a micro-switch that cuts the power supply to the motor
- Oil lubricated reductions with hardened steel screw and bronze gears guarantee high performance, maximum reliability and silent operation
- 4 micrometrically adjustable limit switches



**VN.A30**

Shaft adapter  
Ø 30 mm.

**VN.A3175**

Shaft adapter  
Ø 31.75 mm.

**VN.A40**

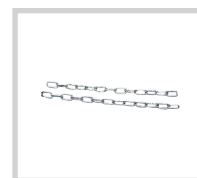
Shaft adapter  
Ø 40 mm.

**VN.RV**

Transmission set  
1:1.8 for 1" shaft  
(25.4 mm) composed  
of two gears with  
external diameter  
78 mm and 138.4 mm  
and chain L = 1 m.

**VN.RM**

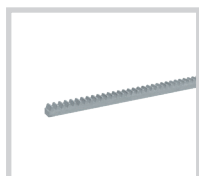
Transmission set 1:1  
for 1" shaft (25.4 mm)  
composed of two gears  
with external diameter  
78 mm and chain L = 1 m.

**VN.CTA**

Chain extension.

**VN.M4**

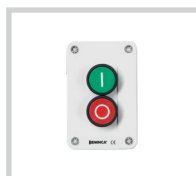
M4 pinion for use  
with rack in horizontal  
sliding door configuration.

**RI.M4ZF**

Galvanised slotted M4  
rack 22x22x2010 mm  
for fastening to the  
side with the teeth.  
Supplied with  
M6 screws.  
**Package of 1 pc.**

**IPB.NO**

Industrial keypad  
fitted with 2 contacts  
that are normally open.

**IPB.NC**

Industrial keypad  
fitted with a contact  
that is normally open  
and a contact  
normally closed.

**LSR.D50**

Laser control and safety  
sensor for industrial  
doors, certified  
EN12453 type E.  
Adjustable Detection  
area up to 5.5x5.5 m.

**LSR.D99**

Laser control and safety  
sensor for industrial  
doors, certified  
EN12453 type E.  
Adjustable Detection  
area up to 9.9x9.9 m.

**RF.SUN**

Battery-operated device  
recharged by means  
of a photovoltaic panel  
applied on a mobile edge.

**RF**

Device with a non  
rechargeable battery,  
with guaranteed  
duration 2 years.

**SC.RF**

Device powered at  
12/24 Vdc with self-test  
function and 2 outputs  
for connection to the  
electronic control units.

**AUTOMATISMI BENINCÀ SpA** • Via del Capitello, 45 • 36066 Sandrigo (VI) ITALY • T +39 0444 751030 • sales@beninca.com

Wire unlock device	VN.S20	VN.S40	VN.ST20	---
Manual override	VN.M20	VN.M40	VN.MT20	VN.MT40
Motor supply	230 Vac (50-60Hz)	230 Vac (50-60Hz)	≈ 400 Vac (50-60Hz)	≈ 400 Vac (50-60Hz)
Max absorbed current	3.3 A	3.3 A	1.7 A	1.7 A
Max torque	130 Nm	130 Nm	180 Nm	180 Nm
Maximum output rotations	18	38	18	38
Output speed	24 r.p.m.	24 r.p.m.	24 r.p.m.	24 r.p.m.
Shaft hole	1" (25.4 mm)	1" (25.4 mm)	1" (25.4 mm)	1" (25.4 mm)
Limit switch reduction ratio	1/20	1/40	1/20	1/40
Duty cycle	30%	30%	50%	50%
Protection level	IP40	IP40	IP40	IP40
Operating temperature	-20°C /+50°C	-20°C /+50°C	-20°C /+50°C	-20°C /+50°C
Lubrication	OIL	OIL	OIL	OIL
Max door surface	35 m <sup>2</sup> /max	35 m <sup>2</sup> /max	40 m <sup>2</sup> /max	40 m <sup>2</sup> /max
Weight	15.1 kg (VN.S20) 15.3 kg (VN.M20)	15.2 kg (VN.S40) 15.3 kg (VN.M40)	14.8 kg (VN.ST20) 15.1 kg (VN.MT20)	15 kg
Items no. per pallet	32 (VN.S20) 24 (VN.M20)	32 (VN.S40) 24 (VN.M40)	32 (VN.ST20) 24 (VN.MT20)	24