



24VDC

VE.650



ROAD BARRIERS

integrated control unit
built-in battery charger
2 neutral springs included

for passages up to 6.5 m



CONTROL UNITS:

VE.650 ————— CP.LADY

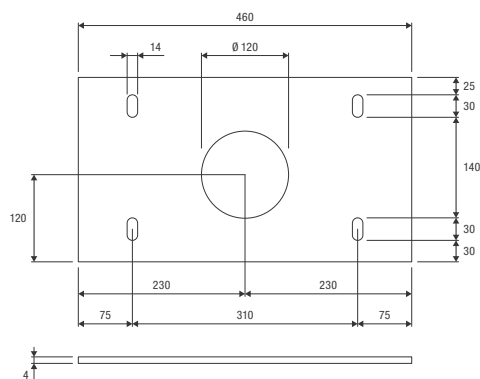
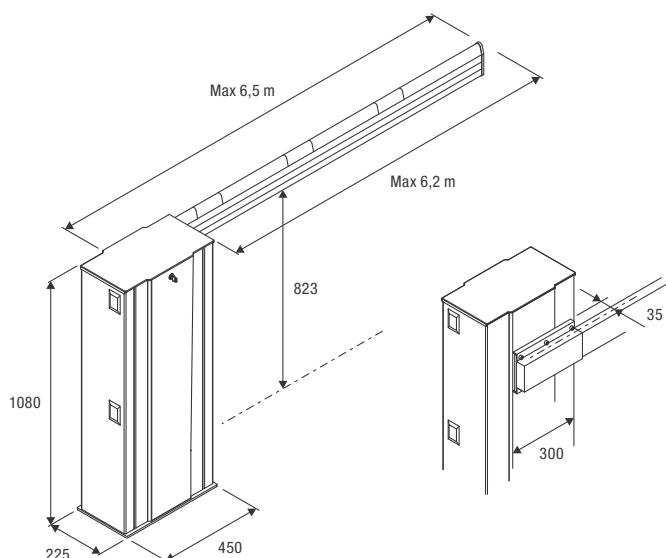


RAL 2009

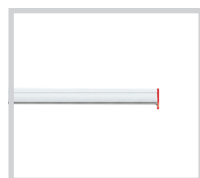
24 Vdc | intensive use

- 24 Vdc electromechanical barrier with control unit with integrated receiver and battery charger and extended range switching power supply from 100 to 250 Vac
- Easy installation and possibility of quick connection for operation of opposed barriers, thanks to the SIS accessory board
- Reduced energy use on stand-by
- Possibility to install FTC.S photocells using concealed system so that they are perfectly integrated
- Adjustable limit switches for slowdown phases
- Available also in the stainless steel version VE.650I

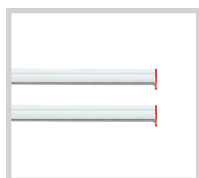
Foundation plate not included (VE.P650)



VE.P650

**VE.650A**

Painted aluminium arm with caps. Dimensions: 6500x100x40 mm.

**VE.650A2**

Painted aluminium arm cut into two pieces measuring 3.25 m each. Requires VE.GT24 joint.

**VE.C650**

Painted tubular arm Ø 90 mm in aluminium L=6500 mm with caps and galvanised fixing bracket. Suitable for areas with strong wind.

**VE.C6502**

Tubular arm Ø 90 mm cut into two pieces measuring 3.25 m each. Requires VE.GT90 joint.

**VE.GT24**

VE.650A2 aluminium arm joint.

VE.GT90

VE.C6502 aluminium arm joint.

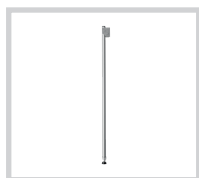
**VE.RP**

Protection rubber for VE.650A with aluminium profile and caps.

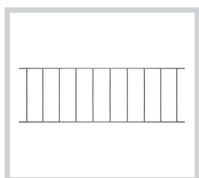
Packing: 10 m

**VE.P650**

Foundation plate with coach screws.

**VE.AM**

Mobile support for arms.

**VE.RAST**

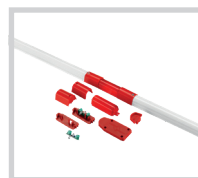
Aluminium rack L= 2 m. H= 60 cm

**VE.AF**

Painted fixed support.

VE.AFI

Stainless steel fixed support.

**VE.L650**

Flashing light set for VE.650A/VE.650A2.

**LED.TL**

2 light 230 Vac LED traffic light.

VE.CS

Traffic-light control unit for LED.TL.

**VE.KMB**

White spring.

VE.KMG

Yellow spring.

VE.KMN

Neutral spring.

VE.KM24

Set of 3 springs: yellow, neutral, white.

**DA.2S**

Electronic board that allows synchronised movement of 2 automation devices (opposed barriers).

**VE.KM1HN**

Single-channel 24 Vac/dc detector for magnetic loop.

VE.KM2HN

Two-channel 24 Vac/dc detector for magnetic loop.

**CABLE.L6**

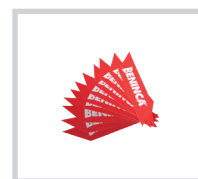
Loop with 6 m connection cable, for VE.KM1HN/VE.KM2HN.

CABLE.L10

Loop with 10 m connection cable, for VE.KM1HN/VE.KM2HN.

**FTC.S**

24 Vac/dc surface mounting photocell. It is possible to synchronise up to 4 pairs of photocells.

**CAT.55**

Set of 20 adhesive refractor strips.

AUTOMATISMI BENINCÀ SpA • Via del Capitello, 45 • 36066 Sandrigo (VI) ITALY • T +39 0444 751030 • sales@beninca.com

ACCESSORIES FOR USE	TYPE OF SPRING	BAR LENGTH (m)
VE.AM - VE.L650 - SC.RES - VE.RP - VE.RAST	1 neutral	4.5
VE.AM - VE.L650 - SC.RES - VE.RP - VE.RAST	1 yellow + 1 neutral	5
VE.AM - VE.L650 - SC.RES - VE.RP - VE.RAST	1 yellow + 1 neutral	5.5
---	1 yellow + 1 neutral	6
VE.AM - VE.L650 - SC.RES - VE.RP - VE.RAST	2 neutral	6
VE.AM - VE.L650 - SC.RES - VE.RP - VE.RAST	2 neutral	6.5

Installations of VE.RAST, SC.RES and VE.RP are mutually exclusive.

TECHNICAL DATA	VE.650
Power supply	100 ÷ 250 Vac (50-60Hz)
Motor supply	24 Vdc
Max absorbed current	3.1 / 1.6 A
Torque	285 Nm
Opening time	5" ÷ 7"
Duty cycle	intensive use
Protection level	IP44
Operating temperature	-20°C /+50°C
Weight	80.2 kg
Items no. per pallet	6